



CP17 Series

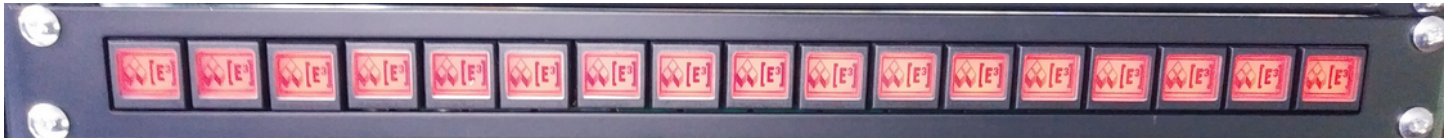
19-inch Rack-Mount Control Panels with Sx6432 switches and RS232 and USB interfaces (Ethernet optional)

TABLE OF CONTENTS

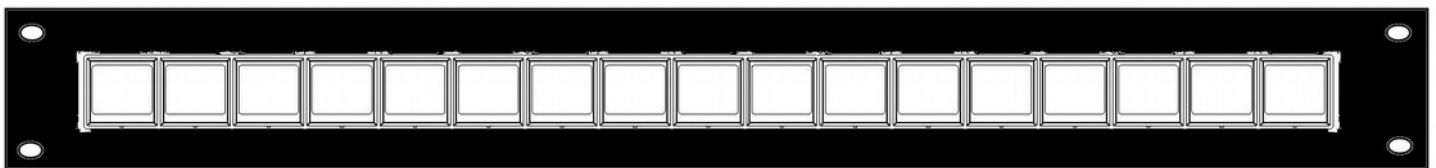
- General Description.....3**
 - CP1701 with 12 SB6432 in 1HU frame.....3
 - CP1702 with 24 SB6432 in 2HU frame.....3
 - CP1703 with 36 SB6432 in 2HU frame.....3
- CP17 Series.....4**
 - Key Matrix.....4
 - CC0064.....4
 - Key Select Tables.....4
 - Controller Board.....5
 - Serial Connections.....5
 - Serial-to-Ethernet Option.....5
 - Power.....5
- Notices.....6**
 - Copyright Notice.....6
 - Technical Notice.....6
 - Warranty Disclaimer.....6
- Ordering Information.....7**
- Change History.....7**

GENERAL DESCRIPTION

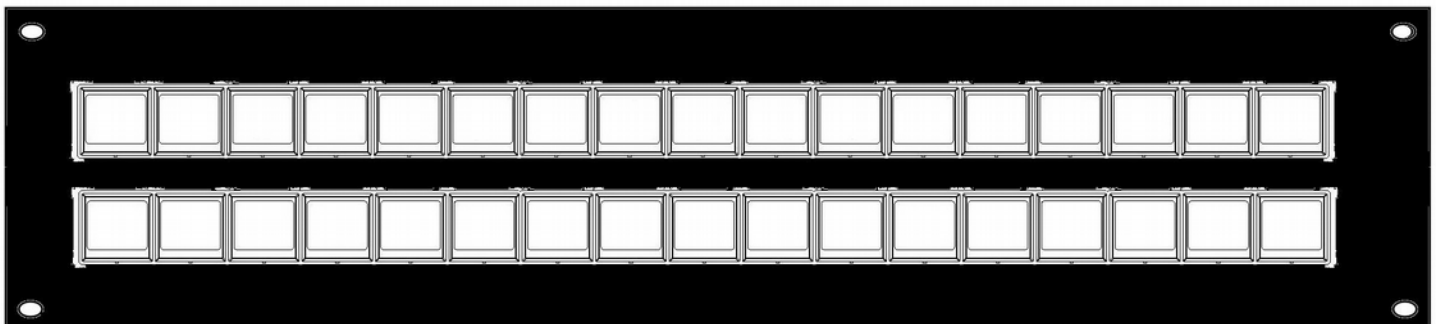
The CP17 Series is a series of custom control panels with 19-inch rackmount frontpanels integrating Sx6432 keys and CC0064 controller with RS232 and USB2.0 interfaces. Serial-to-Ethernet integration available as an option.



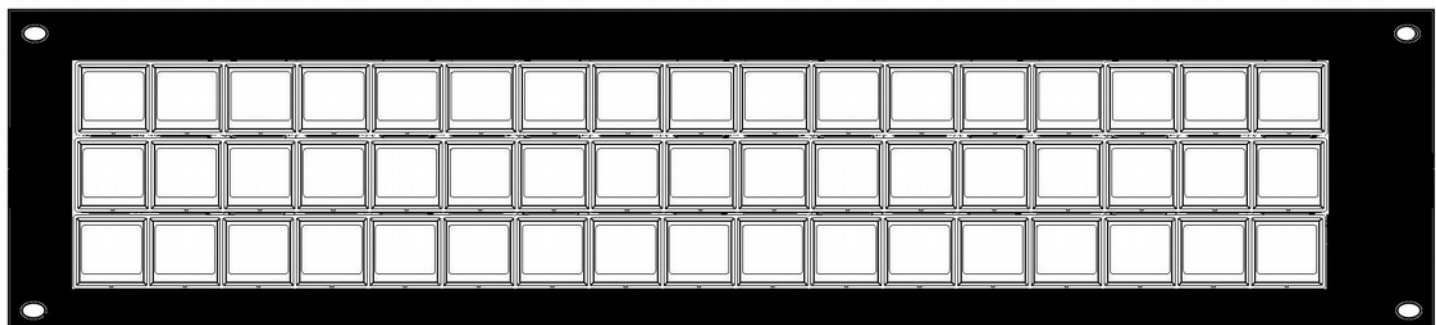
CP1701 with 12 SB6432 in 1HU frame



CP1702 with 24 SB6432 in 2HU frame



CP1703 with 36 SB6432 in 2HU frame



CP17 SERIES

Key Matrix

Aluminum front panel. Mounting stand-off for matrix PCB and controller board on reverse. Mounting access from behind.

Key matrix consisting of 1-3 rows of 17 Sx6432 keys

Aluminum rear housing with cutouts for RS-232 and USB 2.0 (Ethernet optional) connector and power connection.

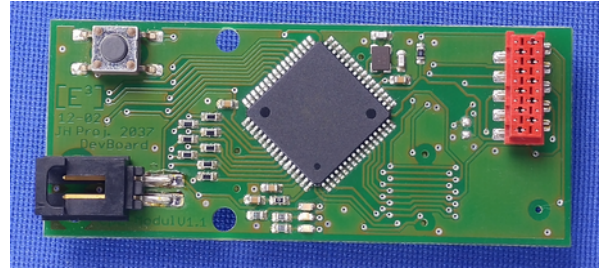
CC0064

Controller board for up to 64 Sx6432 keys

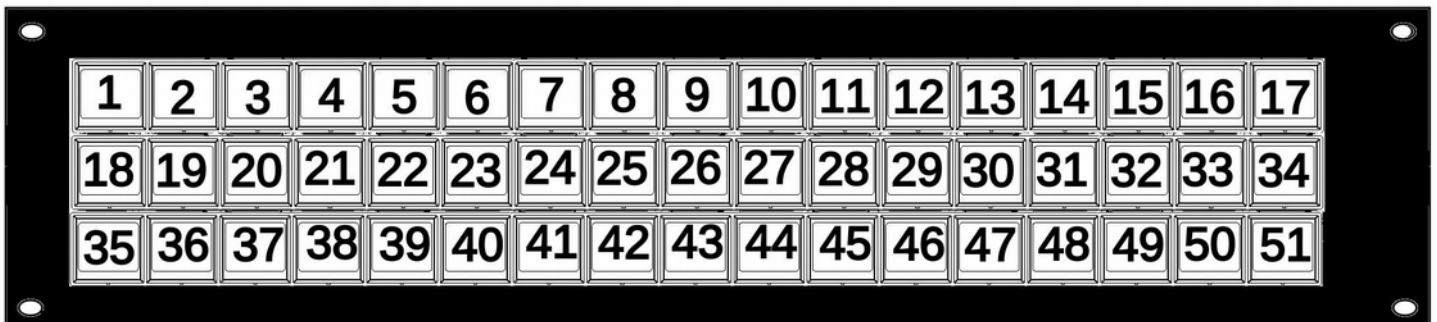
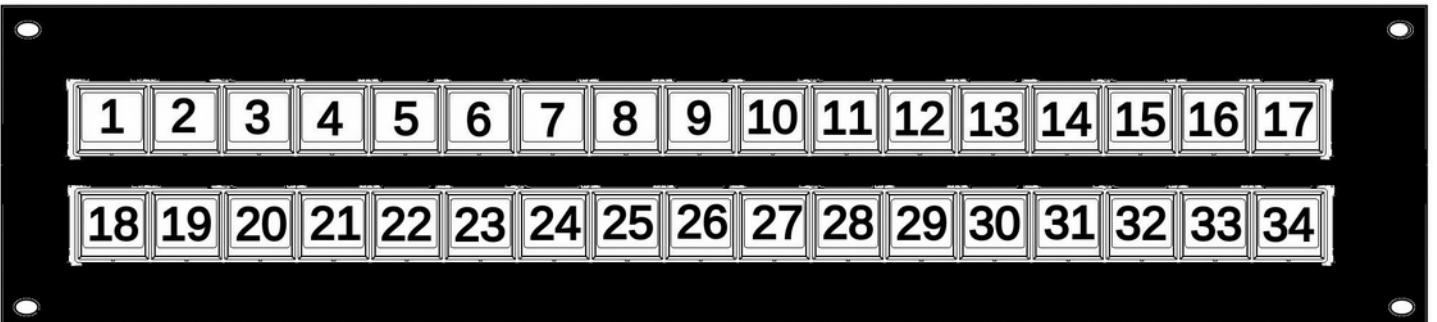
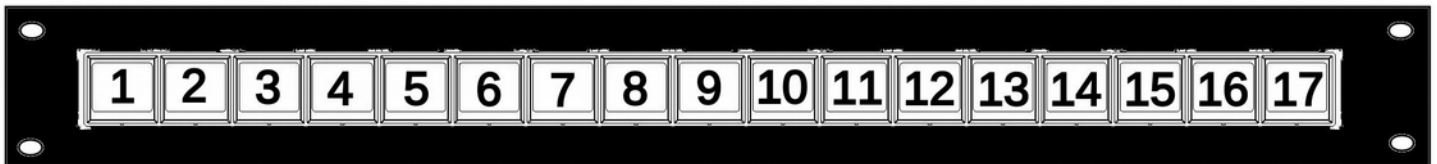
RS-232 and USB2.0 interface with heartbeat and key status (press/release)

On-board memory for bitmaps and colors

Power Supply connector

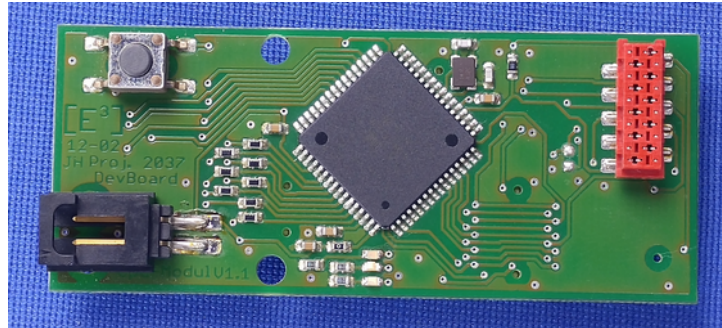


Key Select Tables



Controller Board

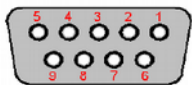
The CP17 series panels are connected to the external control system by RS-232 or USB 2.0 interfaces via the integrated CC0064 controller board. **Please refer to the CC0064-SU handbook for details about the interfacing and command set.**



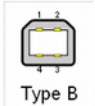
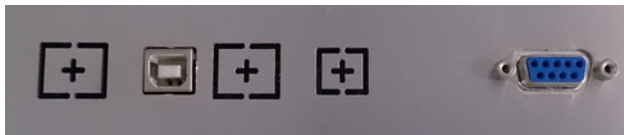
Serial Connections

RS232 9-pin female connector. Only Rx/D, Tx/D and Ground are used. All of the other connections are shorted.

The data format is 8-bit, no parity, 2 stop bits.



PIN 2	TXD
PIN 3	RXD
PIN 5	GND



Type B

USB connection via USB Type B connector.

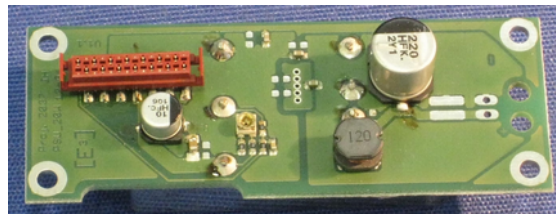
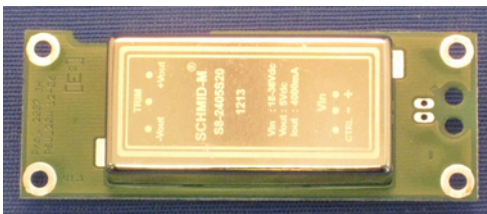
Serial-to-Ethernet Option

All CP17 Series panels are optionally available with a Serial-to-Ethernet adapter

Power

Power is provided via Lumberg SGV30 3-pin connector

- Pin 1 NC
- Pin 2 GND
- Pin 3 VCC



NOTICES

Copyright Notice

© 2022-2024 Copyright [E³] Engstler Elektronik Entwicklung GmbH. All rights reserved.

[E³], *The Third Evolution*[™] and *Legacy Mode*[™] are trademarks of [E³]. *The Keys to Intelligence*[™] is a trademark of I/O Universal Technologies, Inc. used with permission. All other trademarks are property of their respective owners.

No part of this publication may be copied, photocopied, reproduced, translated or reduced to any electronic medium or machine-readable form without the expressed written consent of [E³] Engstler Elektronik Entwicklung GmbH.

Technical Notice

This datasheet is intended for technically qualified personnel trained in the field of electronics.

The knowledge of electronics and the technically correct implementation of the content of this datasheet are required for problem free installation, implementation and safe operation of the described product. Only qualified personnel have the required know-how to implement the specifications given in this data sheet.

For clarity, not all details regarding the product or its implementation, installation, operation, or maintenance have been included. Should you require additional information or further assistance, please contact your local [E³] distributor or [E³] Engstler Elektronik Entwicklung GmbH at techsupport@e3-keys.com. You may also visit our website at www.e3-keys.com.

Warranty Disclaimer

[E³] ENGSTLER ELEKTRONIK ENTWICKLUNG GMBH grants no warranty with respect to this data sheet, neither explicit nor implied, and it is not liable for direct or indirect damages. Some states do not grant the exclusion of incidental or consequential damages and, therefore, this statement may not be valid in such cases.

This data sheet has been produced with all due care. However, since errors cannot be excluded, [E³] Engstler Elektronik Entwicklung GmbH does not grant any warranty or accept any legal responsibility or liability in any form for erroneous statements herein.

ORDERING INFORMATION

Part Number	Description
CP1701-SU	19-inch rack-mount control panel with 17 Sx6432 switches and RS232 and USB interfaces
CP1701-SUE	19-inch rack-mount control panel with 17 Sx6432 switches and RS232, USB and Ethernet interfaces
CP1702-SU	19-inch rack-mount control panel with 34 Sx6432 switches and RS232 and USB interfaces
CP1702-SUE	19-inch rack-mount control panel with 34 Sx6432 switches and RS232, USB and Ethernet interfaces
CP1703-SU	19-inch rack-mount control panel with 51 Sx6432 switches and RS232 and USB interfaces
CP1703-SUE	19-inch rack-mount control panel with 51 Sx6432 switches and RS232, USB and Ethernet interfaces

CHANGE HISTORY

Version	Date	Comments
1.0	06/08/22	Updated document based on CP12 Series
1.1	10/09/24	New corporate address

[E³] Engstler Elektronik Entwicklung GmbH
Auweg 27 • 63920 Grossheubach • Germany

WWW.E3-KEYS.COM